

# Coalition Building & Community Health Assessments: Best Practices in Tribal Communities

Antoinette Medina, MPA & Kelley Milligan, MPH  
Allyson Kelley & Associates PLLC  
August 26, 2023



# Agenda

1. Welcome & Introductions




2. Development of Coalitions



3. Community Health Assessments

- Purpose, Methods, Models, and Examples

**Who is  
here  
today?**

A decorative graphic on the left side of the slide, consisting of several overlapping triangles in various shades of blue, creating a stylized mountain or abstract shape.

**Please share in the chat box:**

- Your Name
- Organization
- Where you're joining us from today
- And a fun fact!

# A little about US...

Antoinette Medina,  
Gabrielino-Tongva Nation,  
MPA

Kelley Milligan,  
MPH



[AKA - Allyson Kelley and Associates PLLC](http://allysonkelleypllc.com)  
[allysonkelleypllc.com](http://allysonkelleypllc.com)

# POLL



Have you ever built a coalition?

Please enter into the chat:

Yes or No

# Building Coalitions



# Stakeholder vs Partner vs Coalition



## Stakeholder

an individual Stakeholder or group who have an interest in the issue (e.g. the community)



## Partner

Usually outside collaborators with a special relationship with the main organization. If your work is helping to create the project, you are a partner



## Coalition

Alliance between invested parties that work together towards a common goal

VS

VS



# Coalitions

Have the potential to catalyze important changes that directly benefit community health and well-being through respectful and meaningful relationships between all parties.





# Why are coalitions needed in Indian Country?

1

Fill gaps in information, services, and resources

2

Allow for sharing of information, provision of services, and building of knowledge

3

As a unified group of tribes and organizations, coalitions can increase access to funding resources and work to create an effective policy agenda for Native issues

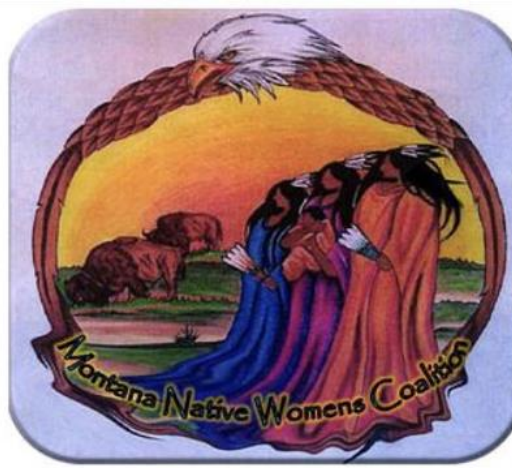


# EXAMPLES OF BUILDING COALITIONS

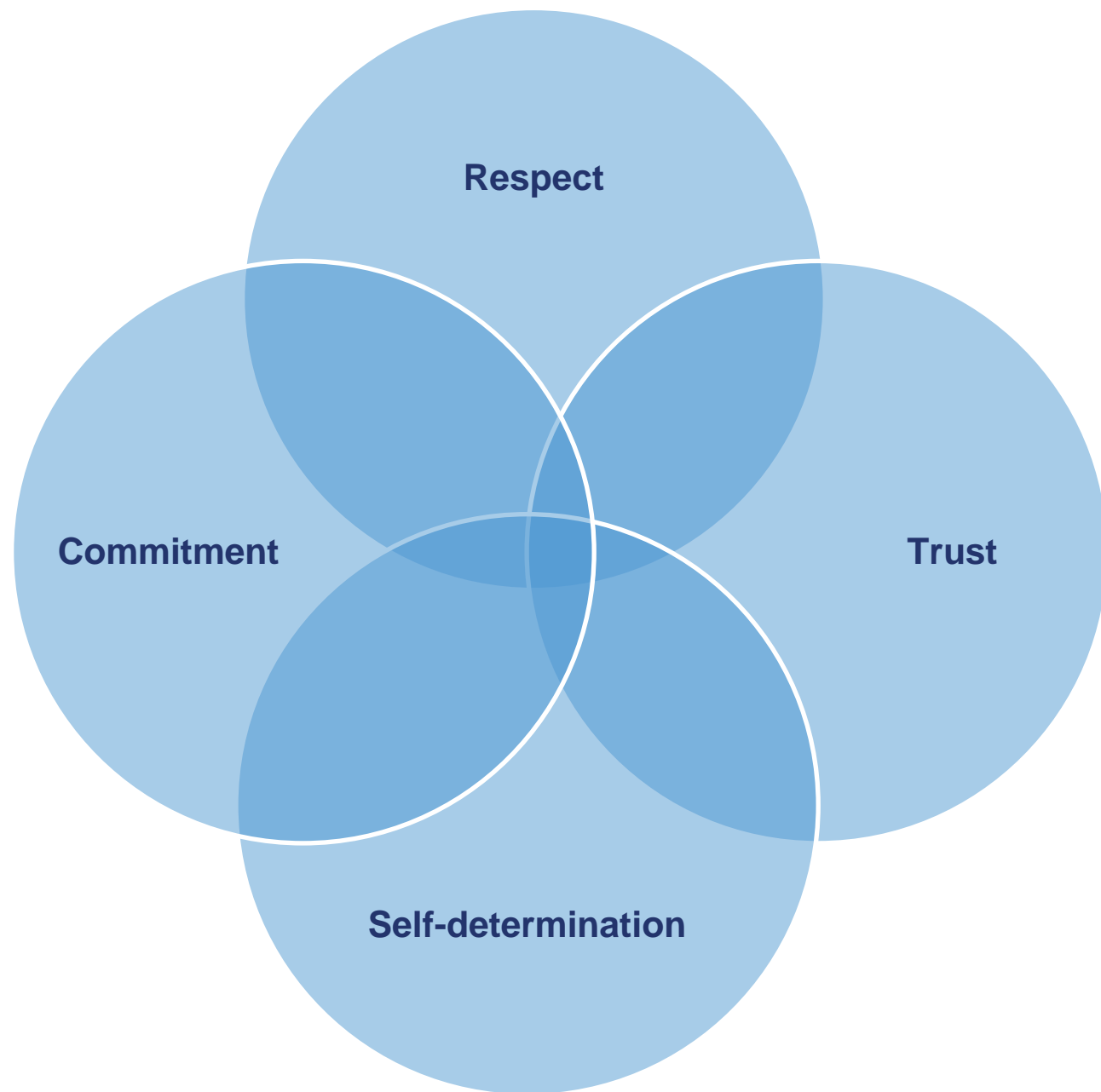
---

Does anyone want to share how they built a coalition?

# Process to Develop Coalitions



# Principles of Indigenous Engagement



# Recommendations for Building Coalitions

**Adopt**  
an appropriate  
structure

**Leverage**  
ongoing efforts within  
the community

**Hire**  
specific individuals to  
facilitate and organize  
meetings

**Conduct**  
a community needs  
assessment (e.g.,  
Community Health  
Assessment)

**Partner**  
with non-Native  
organizations to expand  
quality services and  
resources for Native  
families and individuals

**Communication matters**  
– make each meeting  
relevant, realistic, and  
accessible

**Evaluate**  
efforts to build upon  
and improve





# Who to include in your coalition?

---

- What resources or assets are missing?
- Is there tribal leader, elder, and youth representation?
- Is there cultural competency among staff?
- Are there members from a variety of backgrounds or sectors that share a common goal (e.g. public health, research, culture)

# Recommendations for Building Coalitions

## Effective engagement

Strong relationships, trust, respect, truly understanding the needs of the community in a culturally respectful environment

Building Effective relationships takes time – start early, start slowly

Indigenous right of self-determination can prohibit projects that do not benefit their community

Transparency  
Be upfront and honest about expectations, intentions, resources, or any limitations are key to building trust

# COALITION EXAMPLE

## Issue

- Unable to meet all the treatment and support service needs of clients with substance use disorder.

## Institutions

- Behavioral health, treatment centers, local harm reduction, housing program, food bank, community health department, vocational school

## Resources

- Training, health services, medication-assisted treatment, housing, education, and employment

## Outcomes

- Individuals and families get the treatment and services they need. Healthy individuals, families, and communities

# Conducting a Community Health Assessment



# POLL



Have you ever conducted a community health assessment?

Please enter into the chat:

Yes or No



# What is a Community Health Assessment?

An assessment of the population resources, services, health care status, health behaviors, and health outcomes that helps identify community strengths and areas for growth.



# Why are they important?

Identify areas  
for growth

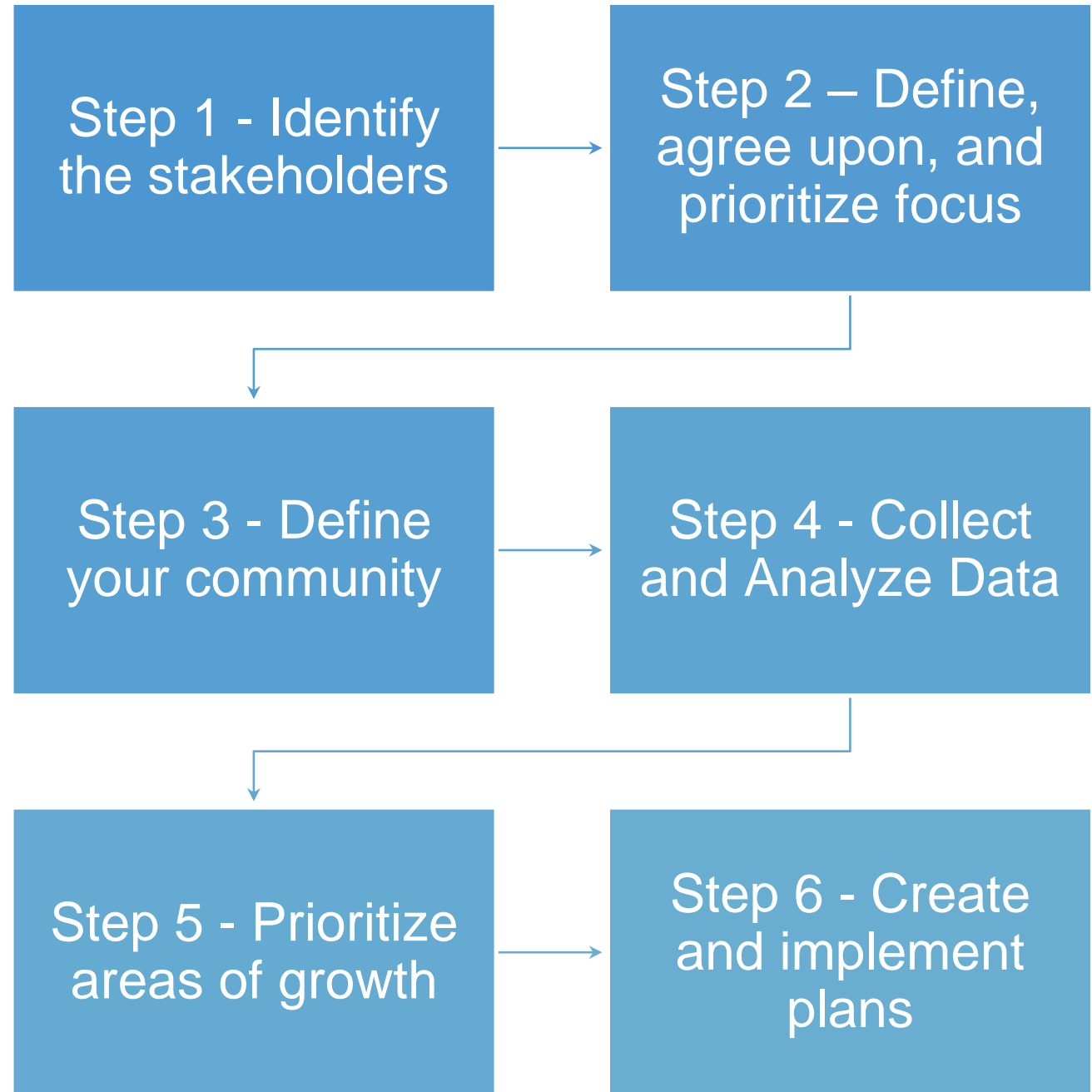
Brings  
partners and  
stakeholders  
together to  
discuss  
problems

Identifies  
possible  
solutions

Helps  
implement  
solutions  
through  
partners and  
shared  
resources

NIHB Definition - According to PHAB, a Tribal community health assessment is a collaborative process of collecting and analyzing data and information to educate and mobilize communities, develop priorities, garner resources, and plan actions to improve the population's health.

# Process for Conducting a Tribal CHA





# INDIGENOUS HEALTH IMPACT ASSESSMENT



# Collect & Analyze Data

## Existing Data (secondary data source)

Population demographics

Health indicators

Health outcomes

School systems

## New Data (primary data source)

Community gatherings

Art-based methods

Collect stories

Survey

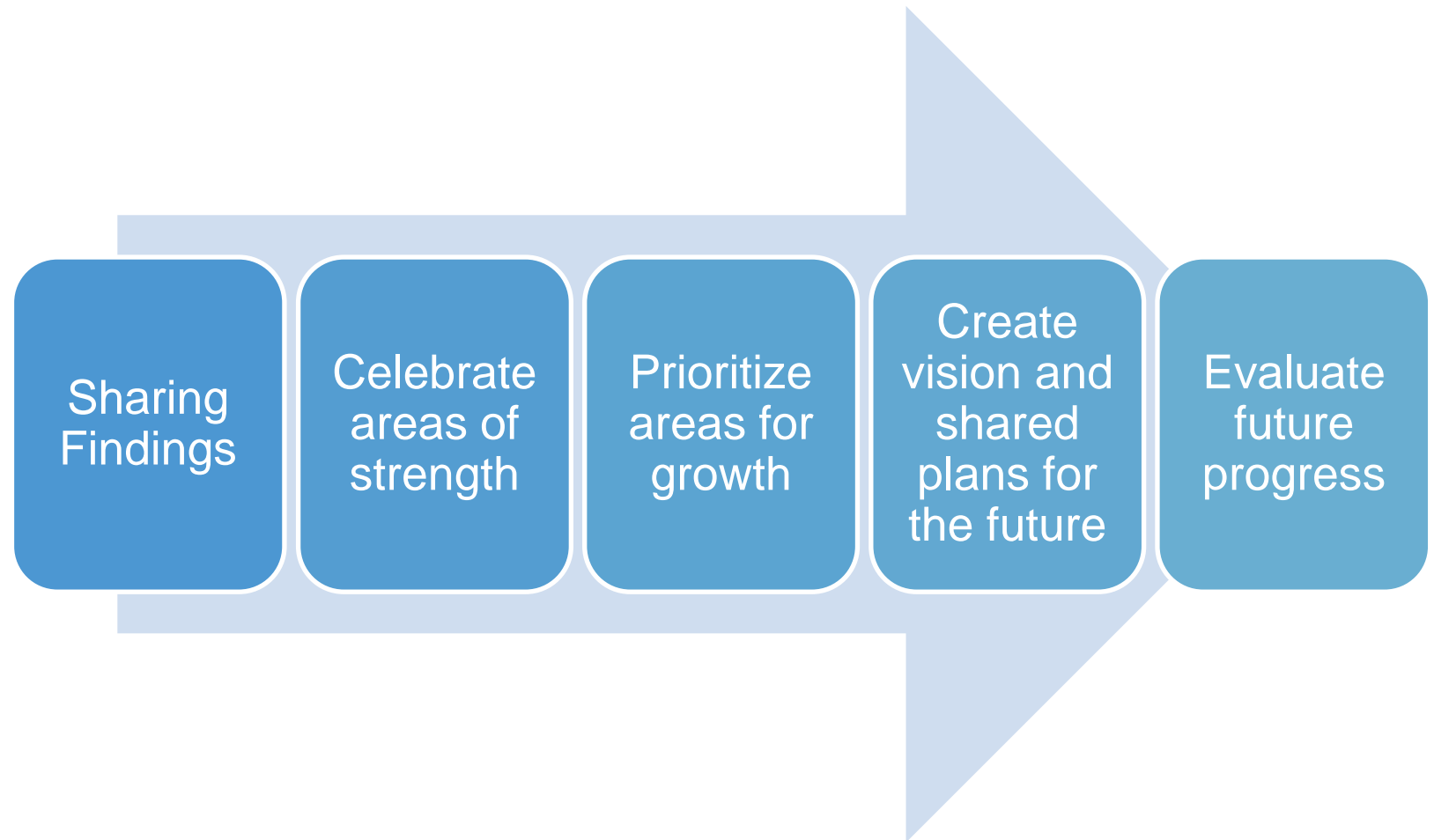


# INDIGENIZING DATA APPROACHES: Conversations on Indigenizing



GRAPHIC RECORDING BY [RebekahAndersonCreative.com](http://RebekahAndersonCreative.com)

# Final Steps





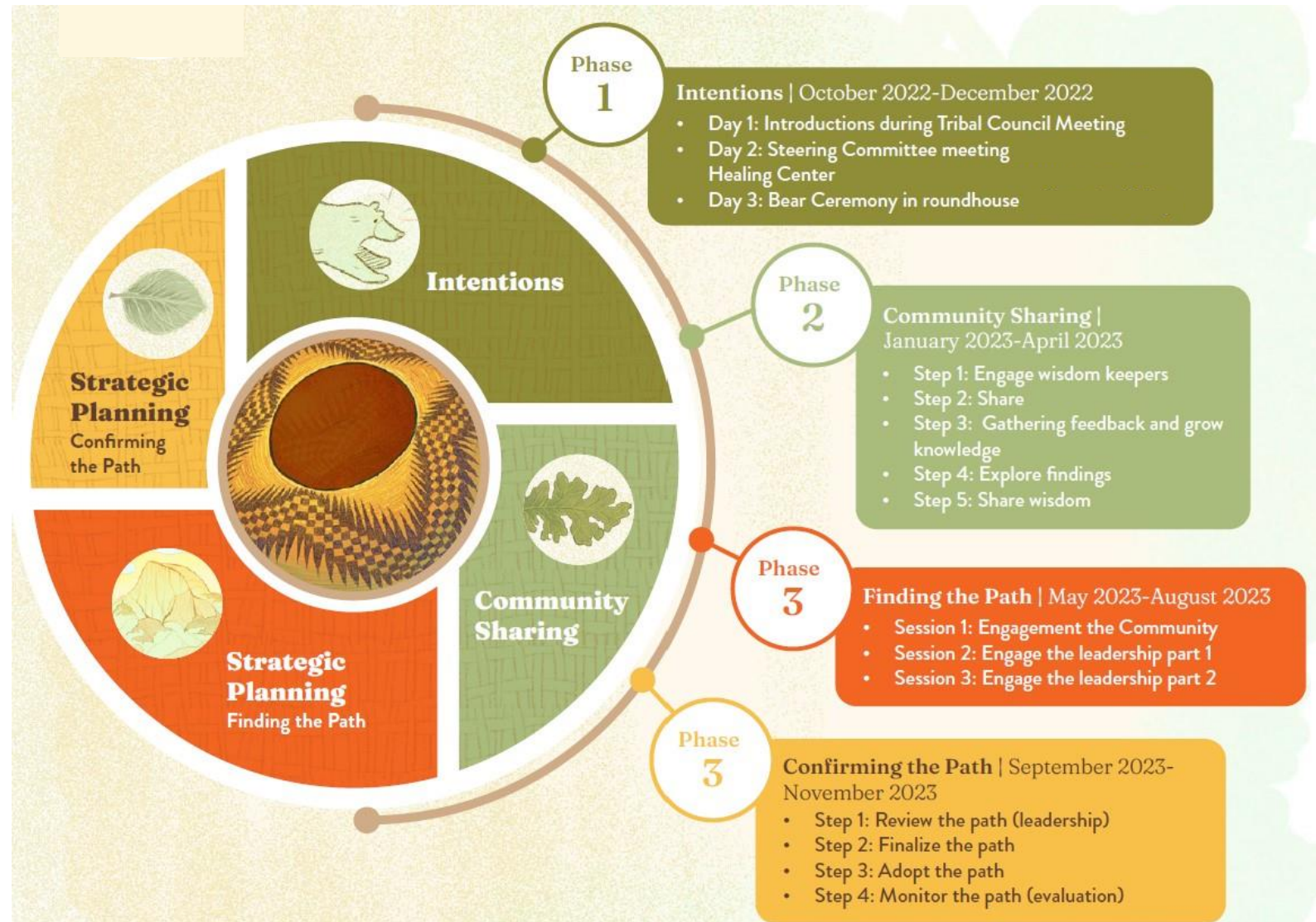
# Participant Examples

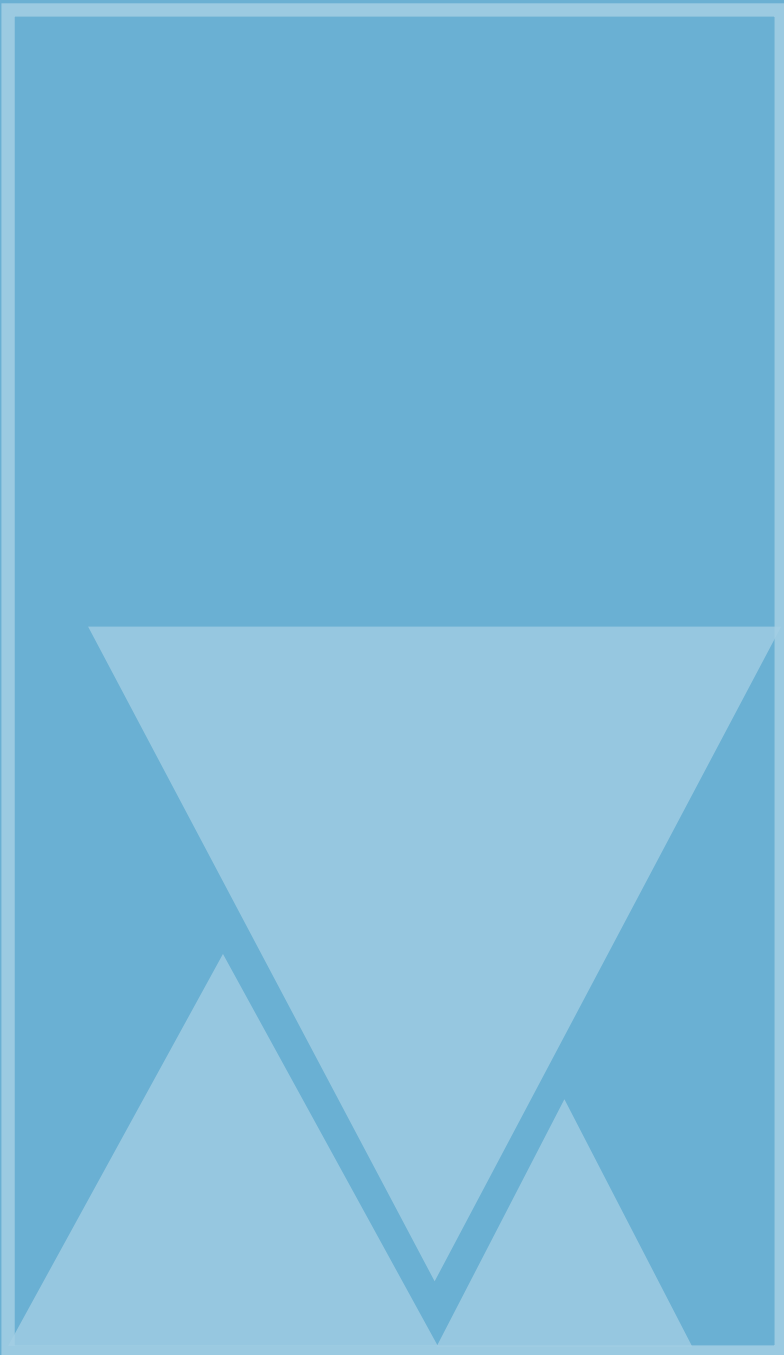
---

COMMUNITY HEALTH ASSESSMENTS

# Example

## Building Coalitions and Creating a Collective Vision for the Future





Examples and Resources

Scan the QR Code with  
your Phone to access

[bit.ly/CHResources](https://bit.ly/CHResources)

**Thank You!**

QUESTIONS?

For more information, contact us at:

[kmilligan@allysonkelleypllc.com](mailto:kmilligan@allysonkelleypllc.com)

[antoinettemedina2022@gmail.com](mailto:antoinettemedina2022@gmail.com)